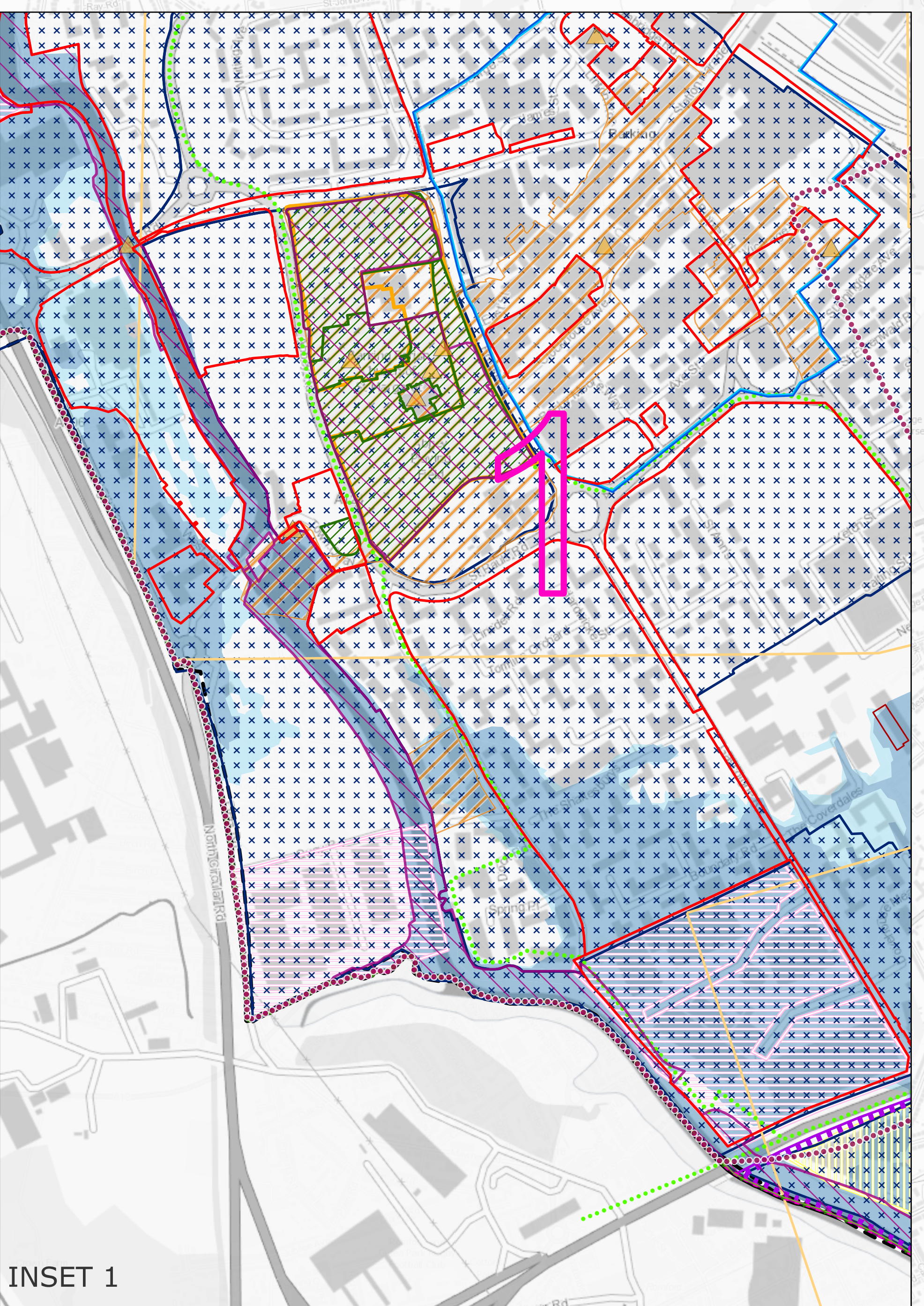
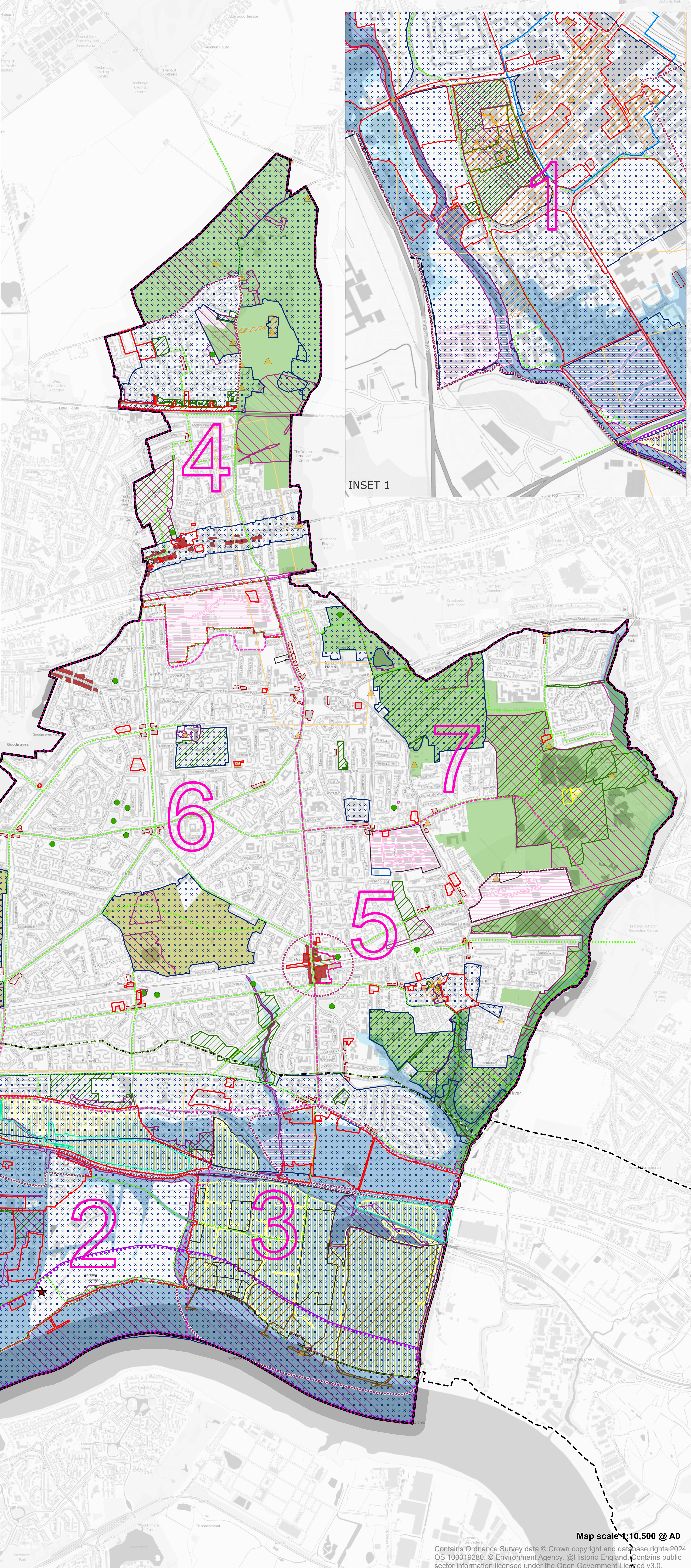


Barking and Dagenham Policies Map

- Local Authority boundary
- Potential District Centres (POLICY SP5: Promoting inclusive economic growth)
- District Centres (POLICY SP5: Promoting inclusive economic growth)
- Barking Town Centre (Policy DMD 3: Development in Town Centres)
- Neighbourhood Centres (POLICY DME 3: Encouraging vibrant, resilient, and colourful town centres)
- London Riverside Opportunity Area (POLICY DMD 2: Tall buildings)
- Strategic Industrial Land (SIL) (POLICY SP 5: Promoting inclusive economic growth)
- Locally Significant Industrial Site (LSIS) (POLICY SP 5: Promoting inclusive economic growth)
- Employment Allocation Sites (Local Plan Appendix 2: Site Allocations)
- Education Allocation Sites (Local Plan Appendix 2: Site Allocations)
- Housing and Housing-Led Mixed Use Allocations Sites (Local Plan Appendix 2: Site Allocations)
- Gypsy and Traveller Site Options (POLICY DMH 6: Gypsy and Traveller accommodation)
- Existing Gypsy and Traveller Site (POLICY DMH 6: Gypsy and Traveller accommodation)
- Allotments (POLICY DMNE 6: Local food growing including allotments)
- Site of Importance to Nature Conservation (SINC) Boundaries (POLICY DMNE 3: Nature conservation and biodiversity, POLICY SP6: Green and blue infrastructure)
- Green Belt (POLICY SP6: Green and blue infrastructure)
- Metropolitan Open Land (POLICY SP6: Green and blue infrastructure)
- Public Open Space (POLICY SP6: Green and blue infrastructure)
- Green Grid (POLICY DMNE 2: Urban greening)
- Air Quality Focus Area (POLICY DMSI 4: Air quality)
- Listed Building (POLICY DMD 4: Heritage assets and archaeological remains)
- Conservation Areas (POLICY DMD 4: Heritage assets and archaeological remains)
- Local Views (POLICY DMD 5: Local views)
- Safeguarded Wharves (POLICY DMNE 4: Water Environment)
- Safeguarded Rail Sites (POLICY SP5: Promoting inclusive economic growth)
- Archaeological Priority Areas (POLICY DMD 4: Heritage assets and archaeological remains)
- Scheduled Monuments (POLICY DMD 4: Heritage assets and archaeological remains)
- Tall Building Locations (POLICY DMD 2: Tall buildings)
- Flood Risk Zone 3 (POLICY DMSI 6: Flood risk and defences)
- Flood Risk Zone 2 (POLICY DMSI 6: Flood risk and defences)
- Thames Policy Area (POLICY DMNE 4: Water Environment)
- Strategic Policy Areas
- SPP1: Barking and the River Roding
- SPP2: Thames Riverside
- SPP3: Dagenham Dock and Freeport
- SPP4: Chadwell Heath and Marks Gate
- SPP5: Dagenham East
- SPP6: Becontree and Heathway
- SPP7: Becontree Heath and Rush Green
- Transformation Areas



INSET 1

