

Did you know
Chadwell Heath
has...

14,353
residents

5th highest in the borough



3,658
under 16s

7th lowest proportion
in the borough



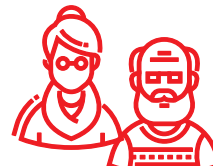
8,893
16s to 64s

Lowest proportion
in the borough



1,802
65 and over

2nd highest proportion
in the borough



35
average age

Older than the
borough average (34)



63.2%
deprived
households

Higher than the borough
average (62.4%)



48.9

average attainment
8 score per pupil (GCSE)
Higher than the borough
average (47.2)



23.1%
adults with no
qualifications

Higher than the borough
average (22.7%)



53.2%
open space

2nd highest in the borough



64.3

births per 1,000
women of childbearing age
Lower than the borough
average (66.7)



76.1
crimes per
1,000 people
Lower than the
borough average (90.4)



13.8
domestic abuse
offences per 1,000 people
Lower than the borough
average (14.9)



£401,250
median house
price (all types)

2nd highest in the borough



7.2%
unemployment
related benefits claimants
Lower than the borough
average (8%)



£45,736
median
household income
Higher than the borough
average (£43,614)



8.3% **UC**
Universal Credit
claimants in employment
Lower than the borough
average (10.1%)

67.8%
Black, Asian and
Multi-Ethnic population
Lower than the borough
average (69.1%)



23.8%
obesity amongst
children in Year 6

Lowest in the borough



3.2%
NEET and
Not Known

Lower than the borough
average (3.9%)



**Barking &
Dagenham**

Sources (Ward infographic)

Office for National Statistics 2022 mid-year population estimates (Population, age)

Office for National Statistics 2021 Census (Ethnicity, adult qualifications, deprived households)

Office for National Statistics 2023 (Births)

Greenspace info for Greater London 2023 (Open space)

Office for National Statistics year ending March 2024 (Average house price)

CACI paycheck 2024 (Median household income)

Department for Work and Pensions September 2024 (Unemployment related benefits claimants, Universal Credit claimants who are in employment)

Department for Education Summer 2024 (GCSE)

Metropolitan Police Service January 2024 to December 2024 (Crimes, domestic abuse)

National Child Measurement Programme 2023-24 (Obesity amongst children in Year 6)

15billionebp management information service June 2024 (NEET and Not Known)